

The M.U.D. Report (Monday Updates & Developments)

OBP Crew

Location: Franconia/Old Bridal Path

Dates:

6/10/24-6/13/24

6/17/24-6/20/24

6/24/24-6/27/24

7/1/24-7/4/24

Project Summary & Goals:

Rock stairs, two reroutes around highly impacted sections. Cairns and scree wall above tree line.

The Crew:

Lou Kimball (Crew Lead)

Tobin Vignos

Tahlia Torres-Cohen

Izzy Hughes

Julia Goode

By The Numbers (#s from work report)

Total Crew Hours	746	Obscuring/Naturalizing	355 sq ft
Rock Steps	47	Junk/Rubble/Scree Wall	24 cu ft
Gargoyles/Set Scree	88	Crush Fill	472 cu ft
Rock Water Bar	4	Retaining Wall Rock	28 cu ft

Partner Crews:

-OBP Trailworks LLC

Total Hours: 316

-Old Soul Stone Works LLC

Total Hours: 100

-AMC AmeriCorps Crew

Total Hours: 885

Successes:

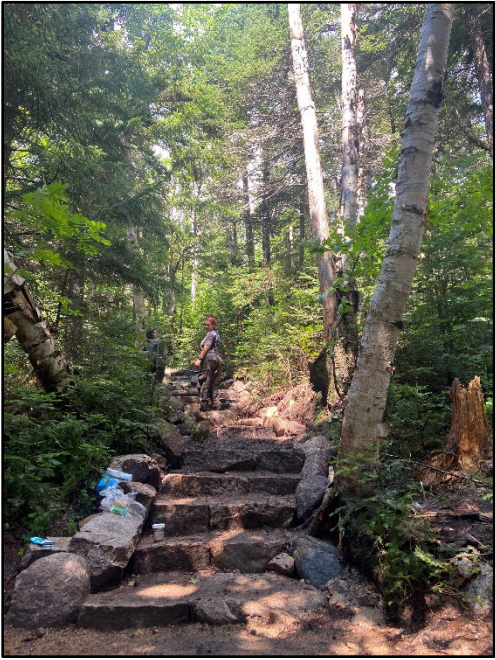
The crew has become able to work independently with increasing ease over the last few weeks. Most folks are opening up their own sites and are cruising through step setting and combining all of the necessary tasks involved in the process. I've loved to see how, more and more, the crew leans on each other's knowledge to problem solve difficult sections and tricky sets. The confidence of the crew has shown through in moments when they are able to teach others. This has come through particularly working with our americorps crew, there have been good teaching moments with many skills, rock splitting, setting, and even efficient crushing techniques.

Challenges:

Crush! One challenge that we consistently encounter on this project is the constant need for massive amounts of it. Due to the nature of the site, and the depth of the gullies that we are working in, we are frequently in need of dozens of cubic feet of crush per site. Keeping the crush train moving and keeping people rotating through the job so that no-one becomes too fatigued is something that is always on my mind. While setting is certainly a challenge in and of itself, the sheer amount of crush we need to accomplish the task is one of the biggest challenges we encounter work wise on the site.

Shoutout:

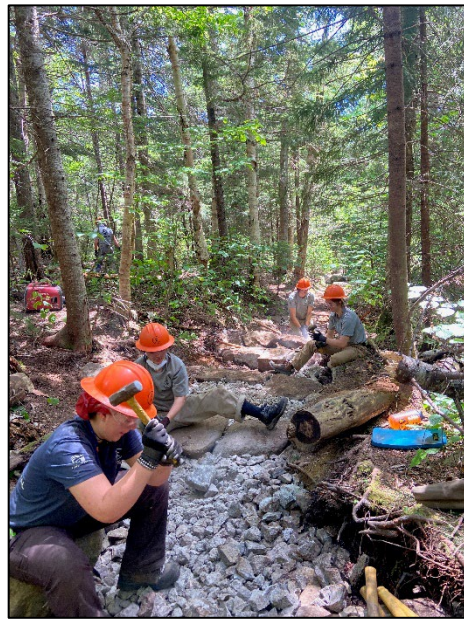
Last week, Tahlia set a beautiful step in a particularly challenging section. Pinched between a large boulder and the edge of the trail, the step has wonderful contacts and visually fits into the landscape in a lovely way. I am especially impressed with their perseverance in working to get the contacts as nice as they are in this tight spot.



Action Shots:



Lou: Alpine Rock Moving



Izzy, Donnie, Riley, Tobin Making Crush